

**DESCRIPTION:**

AMC MODEL SWNND-2184-1DT IS A SINGLE POLE SINGLE THROW, NON-REFLECTIVE/ABSORPTIVE SWITCH MODULE WITH VERY LOW INSERTION LOSS, HIGH ISOLATION, HIGH SPEED AND WITH INTEGRAL TTL DRIVER, DESIGNED FOR 0.5 GHz TO 21 GHz OPERATION.

REVISIONS				
ZONE	REV.	DESCRIPTION	DATE	APPROVED
	A	SEE ER# 039-10	6/1/10	RA

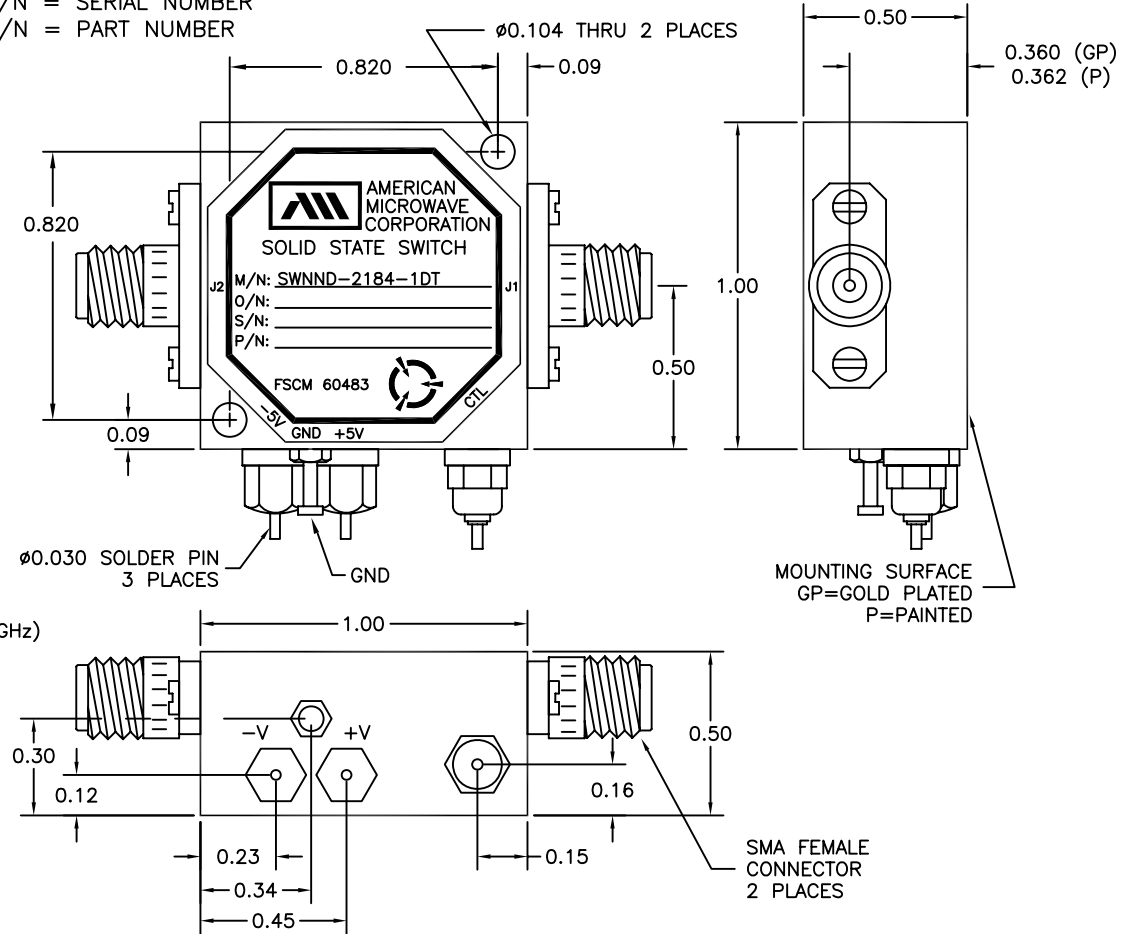
**SPECIFICATIONS:**

- FREQUENCY: ..... 0.5 GHz TO 20 GHz
- INSERTION LOSS: ..... 3.0 dB MAXIMUM
- ISOLATION: ..... 65 dB MINIMUM
- VSWR: ..... ABSORPTIVE IN/OUT: 2.0:1  
 ..... ABSORPTIVE OUT/OFF: 2.0:1
- SPEED: ..... RISE: 10ns MAXIMUM  
 ..... FALL: 10ns MAXIMUM  
 ..... DELAY ON: 50ns MAXIMUM  
 ..... DELAY OFF: 50ns MAXIMUM
- POWER INPUT: ..... (CW)+20dBm (STANDARD), +10 dBm (HIGH SPEED)
- SURVIVAL POWER: ..... 1 WATT CW, 10 WATTS PEAK 1 usec
- CONTROL: ..... TTL LOGIC "0"=ON "1"=OFF
- POWER SUPPLY: ..... +5V @ 50 mA MAXIMUM  
 ..... -5V @ 50 mA MAXIMUM

**OPTIONS:**

- B01 ..... -12V POWER SUPPLIES
- B02 ..... -15V POWER SUPPLIES
- B03 ..... REVERSE LOGIC "1"=ON "0"=OFF
- B05 ..... HIGH SPEED, TURNON/TURNOFF 20 nsec MAXIMUM  
 WHEN APPLICABLE OR OPTION HS
- B08 ..... LOW VIDEO TRANSIENTS - SPECIFY VIDEO BANDWIDTH (2 - 20 GHz)
- B10 ..... HIGHER ISOLATION VERSION (SPECIFY)

M/N = MANUFACTURER PART NUMBER  
 O/N = OPTION NUMBER  
 S/N = SERIAL NUMBER  
 P/N = PART NUMBER



**ENVIRONMENTAL RATINGS:**

- TEMPERATURE: ..... -40°C TO +85°C (OPERATING)  
 ..... -65°C TO +125°C (STORAGE)
- HUMIDITY: ..... MIL-STD-202F, METHOD 103B COND. B
- SHOCK: ..... MIL-STD-202F, METHOD 213B COND. B
- VIBRATION: ..... MIL-STD-202F, METHOD 204D COND. B
- ALTITUDE: ..... MIL-STD-202F, METHOD 105C COND. B
- TEMPERATURE CYCLE: ..... MIL-STD-202F, METHOD 107D COND. A

NOTE: THE ABOVE SPECIFICATIONS ARE SUBJECT TO CHANGE OR REVISION  
 \* Units are designed to meet Environmental ratings but not tested. If Environmental Testing is required, please contact Sales Department.

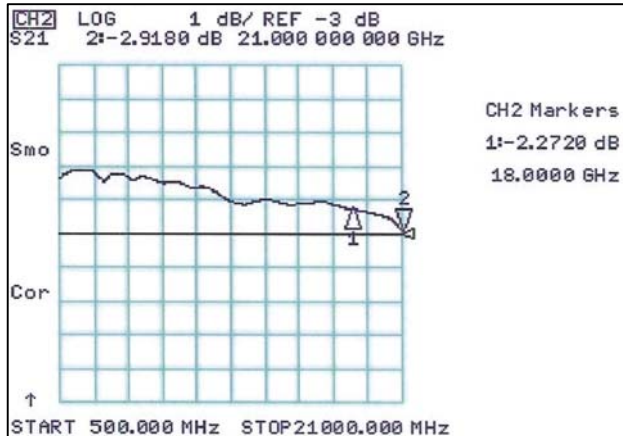
ALL DIMENSIONS ARE IN INCHES  
 TOLERANCES:  
 X.XX ±0.020  
 X.XXX ±0.010

APPROVALS		DATE	AMERICAN MICROWAVE CORPORATION FREDERICK, MARYLAND	TITLE			
DRAWN	<i>K JPMMS</i>	6/1/10		PRODUCT FEATURE SWNND-2184-1DT			
ENG	<i>RA</i>	6/1/10	SIZE	FSCM NO.	DWG NO.	REV.	
QAE	<i>K JPMMS</i>	6/1/10	A	60483	100-7958	A	
			SCALE	N/S		SHEET	1 of 2

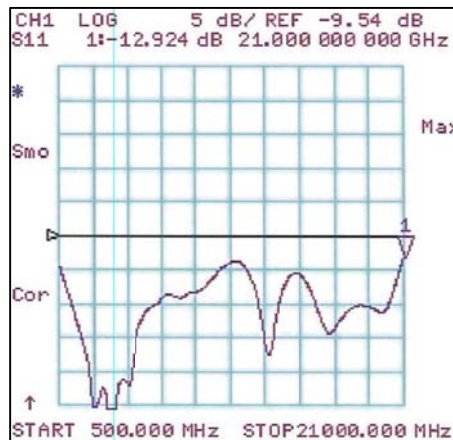
**DESCRIPTION:**

AMC MODEL SWNND-2184-1DT IS A SINGLE POLE SINGLE THROW, NON-REFLECTIVE/ABSORPTIVE SWITCH MODULE WITH VERY LOW INSERTION LOSS, HIGH ISOLATION, HIGH SPEED AND WITH INTEGRAL TTL DRIVER, DESIGNED FOR 0.5 GHz TO 20 GHz OPERATION.

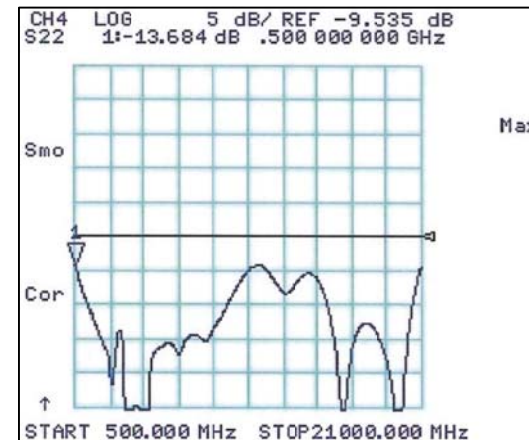
REVISIONS				
ZONE	REV.	DESCRIPTION	DATE	APPROVED
	A	SEE ER# 039-10	6/1/10	RA



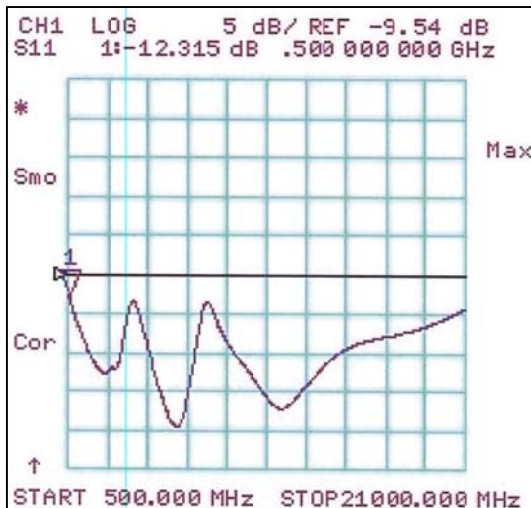
INSERTION LOSS



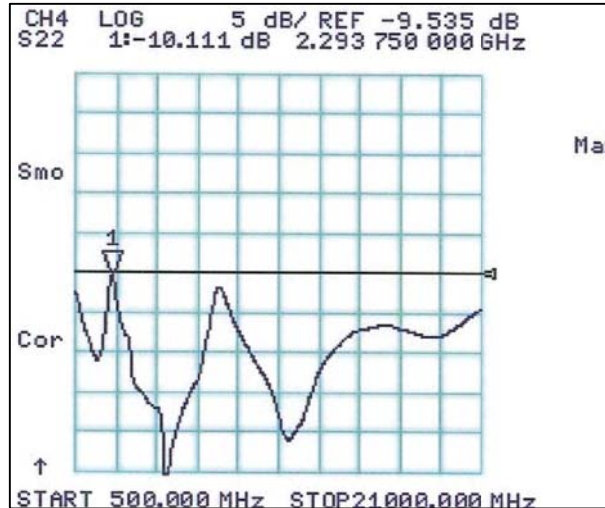
INPUT VSWR



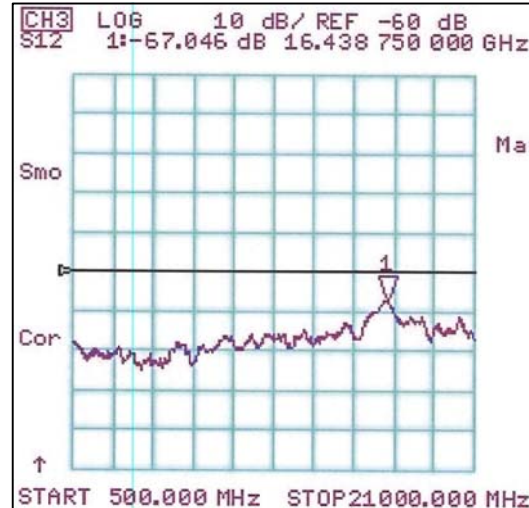
OUTPUT VSWR



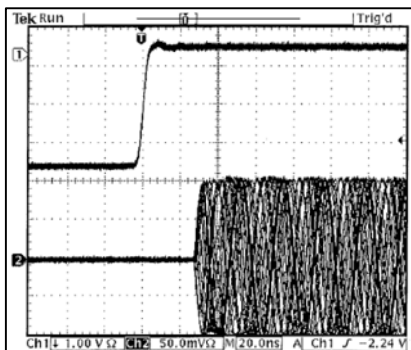
INPUT OFF VSWR



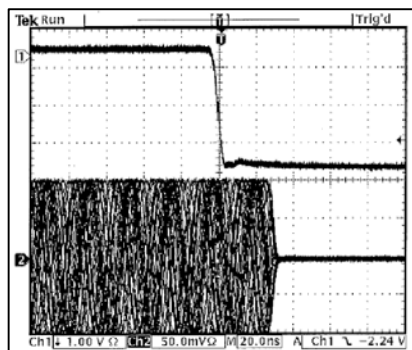
OUTPUT OFF VSWR



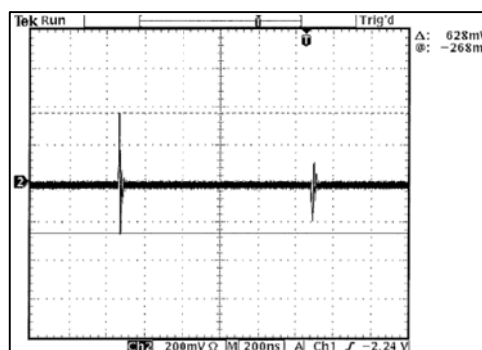
ISOLATION



SWITCHING SPEED, DELAY ON



SWITCHING SPEED, DELAY OFF



VIDEO TRANSIENT

APPROVALS		DATE	TITLE	
DRAWN	<i>K. J. MMS</i>	6/1/10	AMERICAN MICROWAVE CORPORATION FREDERICK, MARYLAND	
END	<i>Rd</i>	6/1/10	PRODUCT FEATURE SWNND-2184-1DT	
QAE	<i>K. J. MMS</i>	6/1/10	SIZE	REV.
			A 60483	A
			SCALE N/S	SHEET 2 of 2